

FRINGE BAR

Technical Information Packet Performance Events (Presented & Rentals)

Space Scheduling Guidelines	1
Crew & Scheduling	1
Equipment	2
Business Hours	3
Production Staff	3
Code of Conduct & House Rules	4
General Venue Information	5
Loading & Parking	5
Fringe Bar Technical Information	5
Seating/Capacity	6
Stage Specifications	6
Lighting	6
Audio	7
Projection & Video	7
Rigging	7
Additional Theatre Inventory	8
Ground Plan	9
Fringe Bar Mezzanine Ground Plan	10
Fringe Bar Biergarten Ground Plan	11

Questions? Email pm@fringearts.com

Last Updated: 1/22/2024

Space Scheduling Guidelines

One of FringeArts' core values is care. Part of living up to this is how we schedule our humans. Therefore, FringeArts operates a schedule that allows for ample breaks and strives for a work-life balance. Please follow these scheduling guidelines for your time in our space:

Crew & Scheduling

- Presented show staffing is determined through mutual agreement based on show needs as determined by Artist/Client rider and/or advance production meetings.

- Every production includes a minimum of one (1) technician, based on scope of project. The most common required position is an Audio Engineer. Other arrangements can be made with mutual agreement between Artist/Client and FA Production Management
- **Minimums:** Crew calls have a set four (4) hour minimum.
 - Example: if a work call is only 2 hours long, then the crew is paid for 4 hours.
 - **Split shifts:** if there are three (3) or more hours between the end of the first shift and the start of the second shift, a new four (4) hour minimum is paid for the second shift
- **Meal Breaks:**
 - Meal breaks are every four (4) to (5) hours
 - Work days that exceed ten (10) total hours in the building must have two (2) one (1) hour meal breaks.
 - On days when a one (1) hour meal break cannot be given due to show calls, meals will be provided to crew at Artist/Client's expense.
 - Consecutive meals cannot be shortened (for example, if you have two (2) meal breaks, one of them must be a full hour)
 - Equity-style "Straight Sixes" are permitted with mutual agreement between Artist/Client and FA Production Management
- **Coffee Break:** Ten (10) minute crew breaks are taken every two (2) hours. Staggered breaks are acceptable.
- **End of Day/Hard Outs:** End of day is a hard out which means that FA staff is locking up the building. Please have the space tidied and your belongings gathered *before* this time.
- **Overtime:** Overtime rates of one and one-half (1-1/2) times the hourly rates are to be paid for hours in excess of forty (40) hours per week and all hours worked between 12:00 AM and 8:00 AM.
- **Pay Period:** Pay periods are defined as Monday-Sunday

Scheduling:

- All schedules are determined through mutual agreement between client/artist and FringeArts/Fringe Bar.
- **Cancellations**
 - Performance cancellations due to inclement weather are decided based on City announced Weather Emergencies (i.e. if Septa is running, FA is running)
 - If renter/producer cancels an event or work call less than 24 hours prior to start of crew work time, crew will be paid for the time they were scheduled.

Equipment

- Artist and Rental contracts will receive the Rep Plot and Standard Inventory unless otherwise agreed to in writing by FA Production Department.
- Large equipment deliveries/pick-ups should be made between the hours of 10am-2pm. This is to accommodate our shared space with the Fringe Bar; their front door is also our "loading dock".
- FA reserves the right to approve or deny requests to purchase or fabricate scenic elements or props.
 - When approved: any supplies, equipment, scenic elements, or props purchased or fabricated by FA are the property of FA.
 - If an Artist/Client wishes to keep any supplies, equipment, scenic elements, or props purchased by FA for the express purpose of supporting the performance engagement, the Artist/Client agrees to reimburse FA for those items no later

than 10 business days following the close of engagement. FA agrees to produce an invoice and proofs of purchase for those items.

Sound

- The Fringe Bar and Haas Biergarten are open from 5pm-2am. There is a low possibility of sound from these areas leaking into the theater space.
- During summer months, Biergarten plays music but turns it off during performances.

Lights

- Biergarten lights cannot be struck, dimmed, or turned off
- FA has no control over the The Ben Franklin Bridge lights

Business Hours

- The FringeArts office is open 10am-6pm, Monday-Friday
- The Fringe Bar is open
 - 5:00pm - 10:30pm Monday, Wednesday, Thursday
 - 5:00pm - 11:30pm Friday, Saturday
 - 5:00pm - 10:00pm SundayTheir staff arrives at 3pm.

Production Staff

Kristen Ruthemeyer Hammer (she/her), Director of Production

Kelly Orenshaw (she/her), Associate Production Manager

Sydney Norris (she/her), Master Electrician

Josh Bruton (he/him), Head of Audio

Chuck Whitters (he/him), Technical Director

Code of Conduct & House Rules

The purpose of FringeArts' Code of Conduct is to promote an inclusive, welcoming and respectful environment for artists, patrons, staff, volunteers, and all others who enter our space and engage in the work that supports our mission. By entering our space, all are expected to adhere to the Code of Conduct.

- **COMMUNICATIONS AND INTERACTIONS.** Interactions in person and in writing should be respectful with an aim toward promoting a respectful and considerate environment for all. Whenever possible, we assume good intentions. Our expectations include, but are not limited to, listening to the perspectives of others, seeking to understand differing opinions, using potential conflict as an opportunity for deeper understanding, and acknowledging others' efforts.
- **DISCRIMINATORY BEHAVIOR.** FringeArts strives for an accepting environment where everyone can feel welcomed and respected. FringeArts' commitment to an inclusive, welcoming and respectful environment means that verbal and physical conduct in our space that disrespects, denigrates or shows hostility or aversion toward an individual because of the person's race, color, gender, gender identification, sexual orientation, age, religion, national origin, disability, or any other class of persons or characteristics protected by law that creates an intimidating, hostile or offensive environment or unreasonably interferes with an individual's work performance is unacceptable and will not be tolerated. Examples of an accepting environment include:
 - calling people what they wish to be called
 - striving to use correct pronouns, and when unsure, to ask
 - using person-first language when appropriate (example: a person with autism vs an autistic person)
 - respecting individual experiences and worldviews
 - leading with curiosity
- **SEXUAL HARASSMENT.** FringeArts' commitment to creating a safe and respectful space includes ensuring an environment free of unwelcome sexual advances, requests for sexual favors, and other verbal or physical conduct of a sexual or gender-based nature. Such behavior is unacceptable and will not be tolerated including, but not limited to, instances where such conduct interferes with an individual's work performance or creates an intimidating, hostile, or offensive working environment.
- **ACCESSIBILITY.** FringeArts is committed to welcoming and serving our entire community, including those who may require accommodations in order to access our space and experience our programming. This includes accessibility services for persons with physical disabilities and sensory differences. We expect our staff,

artists, and patrons to be respectful of and support these accommodations. We aim to learn as much as we can from the cultural accessibility advocate community, and continue to strengthen our literacy and proficiency in making our space and our culture as accessible as possible.

- **PERSONAL PROPERTY.** FringeArts is NOT responsible for loss of, or damage to, personal property you bring onto FringeArts' property. We also urge you to not leave personal property unattended at any time.
- **NO SMOKING.** Smoking is strictly prohibited in the building and within 25 ft. from the building perimeter.
- **FOOD AND OTHER PERISHABLES.** No outside food or beverage may enter the Restaurant space at any time.

General Venue Information

FringeArts' available facility is divided into three venues: Fringe Bar, Theatre, and Studio.

- 30'W x 20'H moveable airwall partition on the stage left side of the Theatre separates the Fringe Bar and Theatre spaces. This can be opened for loading in/out or to unify spaces for multi-venue events.
- 22'W x 16'H moveable airwall partition on the stage right side of the Theatre separates the Theatre and Studio spaces. This can be opened for loading in/out, to use the Studio as additional backstage space for the Theatre, or to unify spaces for multi-venue events.

Loading & Parking

Loading door dimensions: 5'-9"W x 9'-6"H

No loading dock. All loading is through main double doors at street level on the Race St side of the building.

With advance notice, moveable airwall partitions can be opened during load in to provide a direct path from the front door into the theatre. Airwalls are not available when pass-through venues are in use.

On-site parking and loading space is limited and must be arranged in advance with Production Management.

Fringe Bar Technical Information

The Fringe Bar is open

5:00pm - 10:30pm Monday, Wednesday, Thursday

5:00pm - 11:30pm Friday, Saturday

5:00pm - 10:00pm Sunday

Fringe Bar staff arrives at 3pm.

Seating/Capacity

Variable per event.

Capacity in standard restaurant layout: 52 + 20 bar seats

Capacity in standing room only layout: 90

Mezzanine capacity: 49, with 30 seats

Stage Specifications

Stage

- Stage is in the corner of the restaurant backed by a large patio window SR and a brick wall SL with window above.
- Stage width: 8'-11" (2.72 m)
- Stage extension available adding 3'-0" (91 cm) of depth to the front.
- Height: 1'-2" (36 cm)
- Stage Floor is a reclaimed oak hardwood with a semi gloss clear poly finish.

Stage Entrances

- Stage is accessible via stairs on the stage right side
- At this time, the Fringe Bar stage is not wheelchair accessible

Dance Floor

- When arranged in advance, furniture can be removed to create a dance floor between the stage and the bar

DJ Booth

- DJ booth located on mezzanine level, near the water tower
- Booth is closed off from the rest of the space with a gate and is faced with wood so gear/cables/etc stored under are not seen.
- Dimensions:
 - Floor Space: 9' x 5'
 - Gate Opening: 4'
 - Tabletop height: 4'
 - Tabletop size: 6' x 2'

Lighting

Dimming/Control:

- Mac Mini with ETC Nomad
 - This device is dedicated to operating the lighting system and cannot be used for other purposes
- ETC SmartPack with ThruPower
 - all dimmers and relays are dedicated to FringeBar Rep and cannot be used for other purposes

Instrument Inventory:

- (1) 36° ETC Source 4, 550w
- (1) 26° ETC Source 4, 550w
- (2) 50° ETC Source 4, 550w
- (6) D22 Lustr PARs

- (2) Chauvet DJ Intimidator Spot 260X
- (9) Elation Sixpar 300

Accessory Inventory:

- See [Theatre Inventory](#). Anything not in use by Theatre/Studio is available for use in the Fringe Bar, within the limits of Fringe Bar power and signal restrictions. Please advance all additional lighting needs with FringeArts Production Management and/or Master Electrician.

Audio

Console/Inputs:

- Yamaha LS9-32
- (12) inputs on stage
- (2) inputs in DJ booth

PA:

- Community 15"x 2" Mains L&R

Additional Speakers:

- Yamaha DSR118 Powered Single 18" Subwoofer (when needed)
- See [Theatre Inventory](#). Anything not in use by Theatre/Studio is available for use in Fringe Bar

Microphone/DI Inventory:

- (3) wireless microphones
- See [Theatre Inventory](#). Anything not in use by Theatre/Studio is available for use in Fringe Bar. Exception: wireless channels are dedicated per space. Theatre wireless cannot be moved to Fringe Bar and vice versa.

Projection & Video

- Projection Screen: (9' x 5') flown retractable screen
- No built-in projector, can use Theatre's spare projector when not in use by Theatre/Studio

Rigging

- Rigging options are limited, please consult with Production Management and/or Technical Director to discuss your needs.

Additional Theatre Inventory

Only available if discussed in advance with FringeArts' Director of Production or Associate Production Manager.

Additional Speakers

- (8) Yamaha DSR112-CA 2-way powered loudspeaker
 - 12" low frequency driver
 - 2" high frequency driver
 - (4) stands
- (3) Yamaha DXR-10 2-way powered loudspeaker
 - 10" low frequency driver
 - 2" high frequency driver

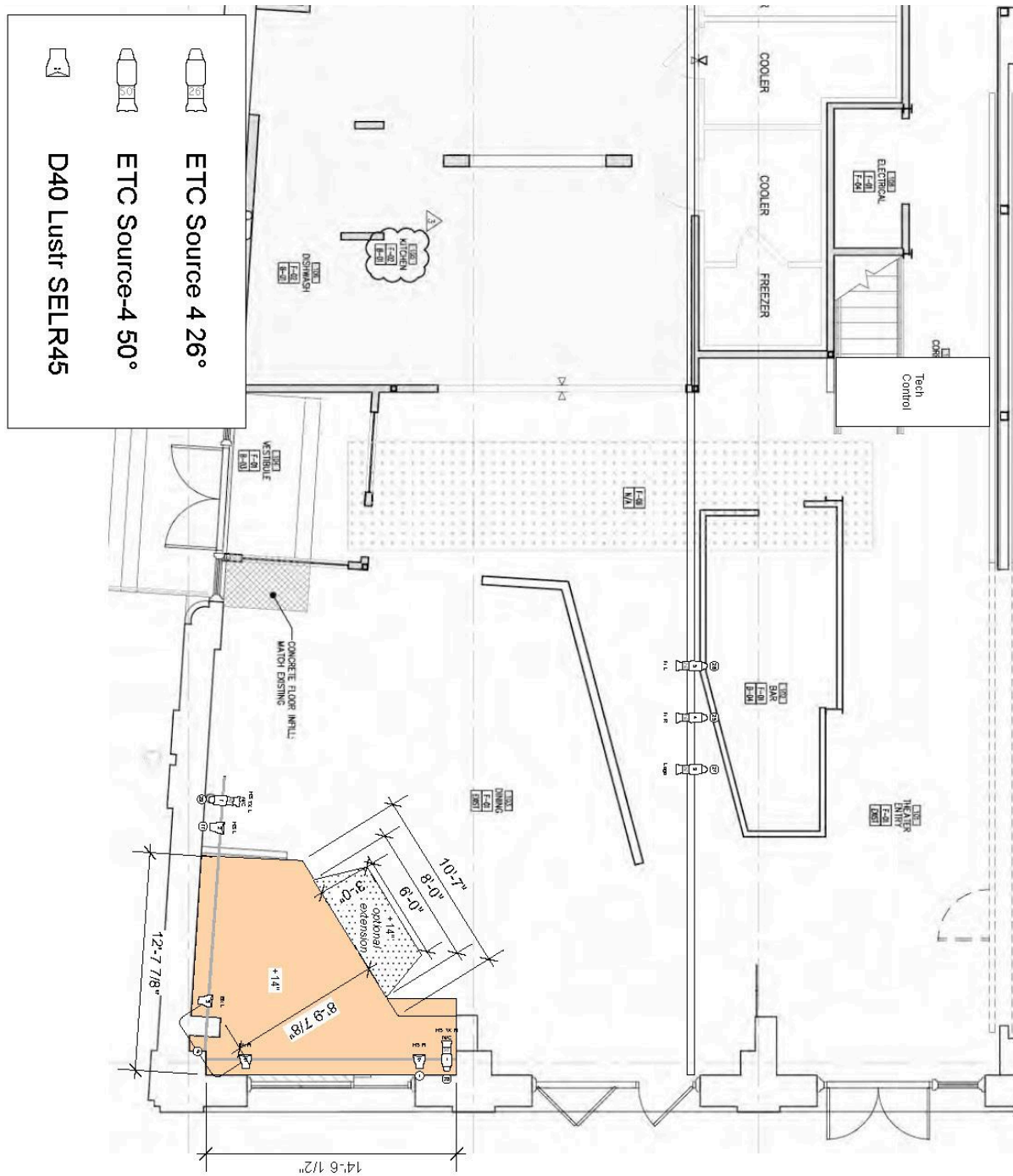
Microphone/DI Inventory

- (8) Shure SM58
- (5) Shure SM57
- (1) Shure PG58 switched
- (4) Sennheiser EW 300 G3 Wireless systems with both e835 handheld & lavalier transmitter
- (3) Shure SM81
- (2) CAD M179
- (2) Crown PCC 160
- (7) DI passive mono
- (2) DI stereo
- Drum kit mic package
 - (2) CAD C9 (overhead)
 - (3) CAD D29 (toms)
 - (1) CAD D19 (snare)
 - (1) CAD D10 (kick)

Backline

- Yamaha Recording Custom Drumset
 - 22x16 Kick with Tama Iron Cobra 200 pedal
 - 14x6.5 Snare
 - 10x10 Rack Tom
 - 12x10 Rack Tom
 - 13x11 Rack Tom
 - 14x14 Floor Tom
 - 16x16 Floor Tom
- Yamaha S90 Keyboard
- Fender Hot Rod Deluxe Guitar Amp
- Roland KC500 Keyboard Amp
- Ampeg SVT-3 Pro Bass Amp and PR-410H Cabinet

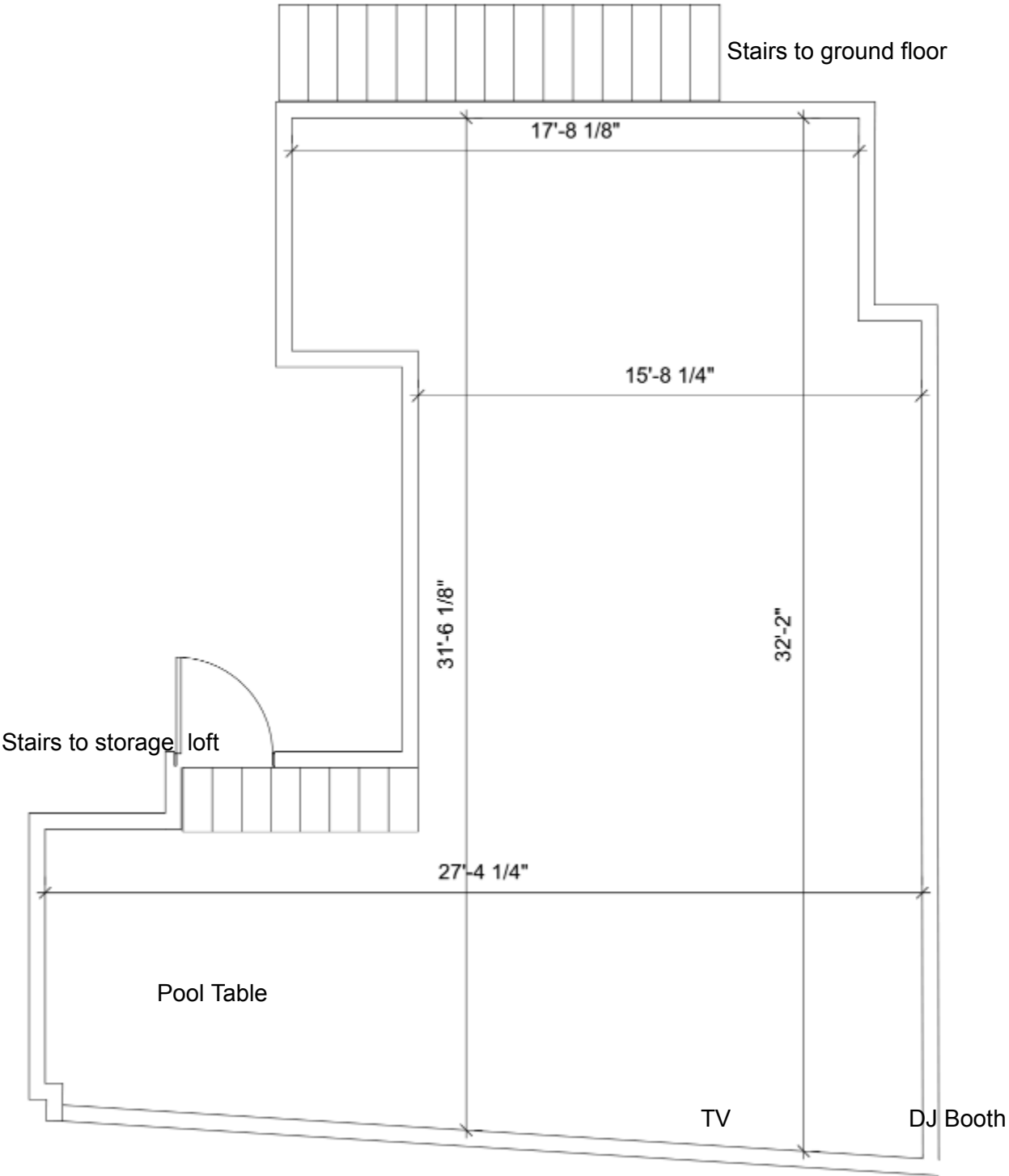
Ground Plan



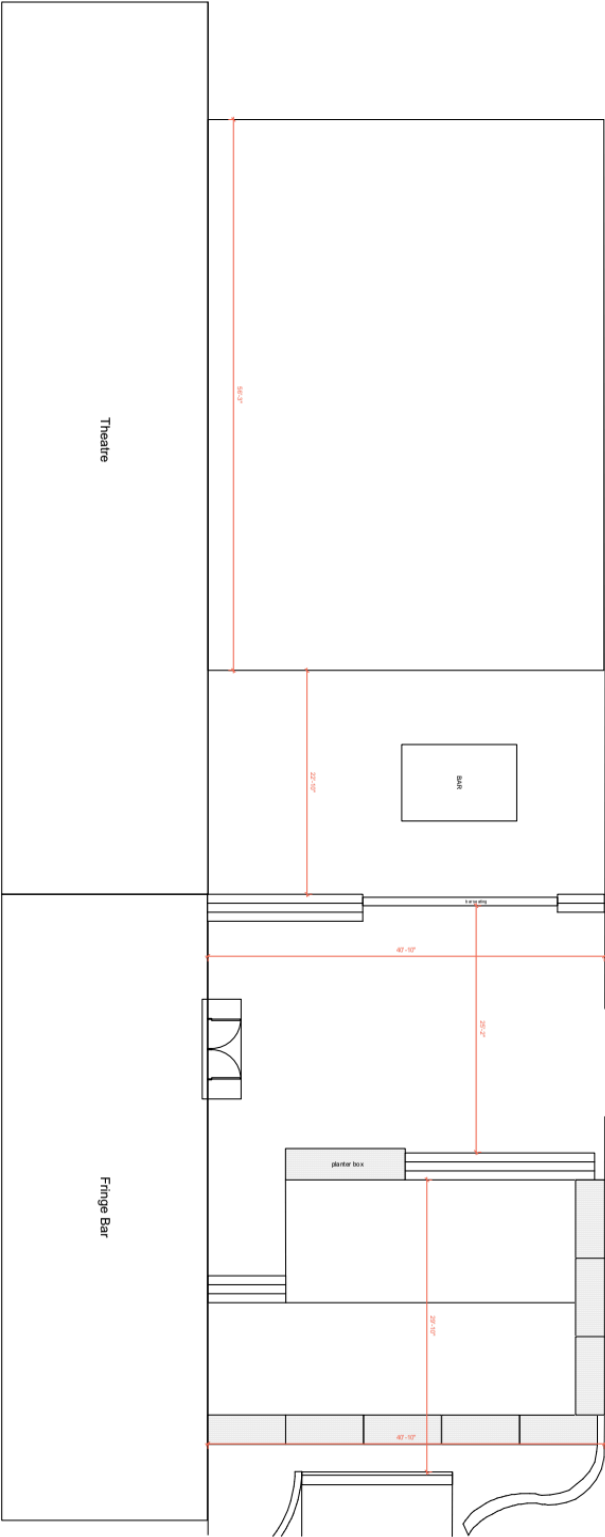
Notes:

- As of March 2023, banquette wall between the bar and the stage has been removed. Bar is in same location but is now rounded and has more seating
- As of March 2023, there is a DJ booth on the Mezzanine level, above the vestibule entrance along Columbus Blvd, overlooking the bar. Center left on this image.
- As of March 2023, additional lighting and a disco ball has been installed above the area between the bar and the stage as dance floor lighting.

Fringe Bar Mezzanine Ground Plan



Fringe Bar Biergarten Ground Plan



Race Street

Columbus Blvd